

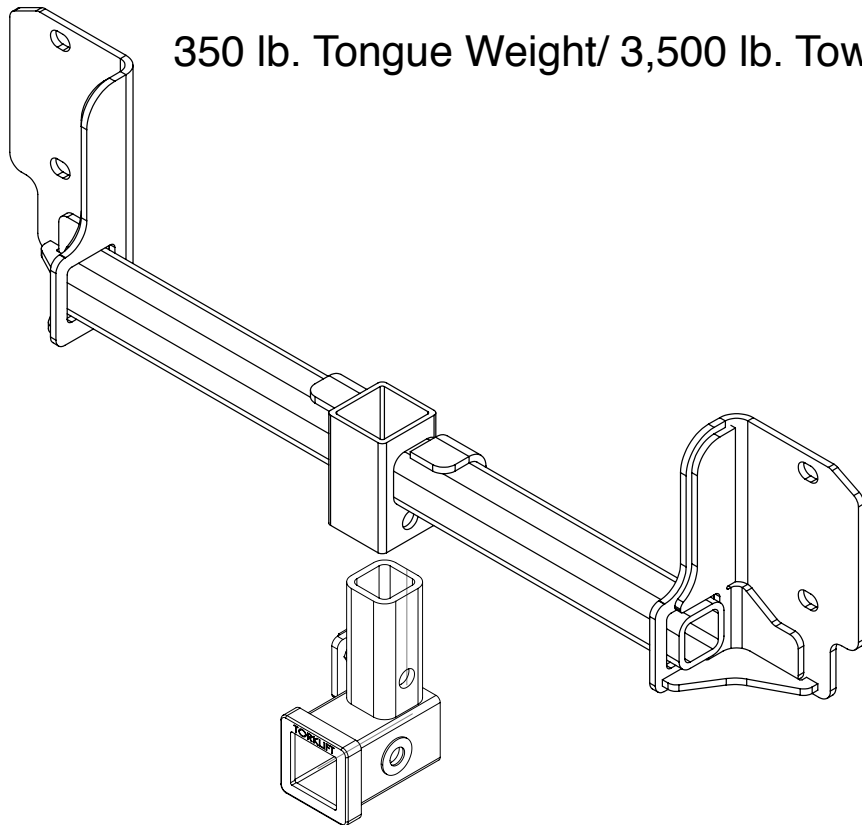
**ecoHITCH** -Designed Specifically For Your **Green Vehicle**

# Installation Instructions

Application Fits  
2013+ BMW X3  
X7275 & X7276

2" & 1.25" EcoHitch Invisi

350 lb. Tongue Weight/ 3,500 lb. Towing Weight



Torklift Central  
315 Central Ave N  
Kent, WA 98032  
253-854-1832  
[www.torkliftcentral.com](http://www.torkliftcentral.com)  
[support@tlcentral.com](mailto:support@tlcentral.com)

## Stay Connected



torkliftcentral



torkliftcentral



tlcentral



torklift central



torklift central



Bolt Kit Weight: 245g +/-

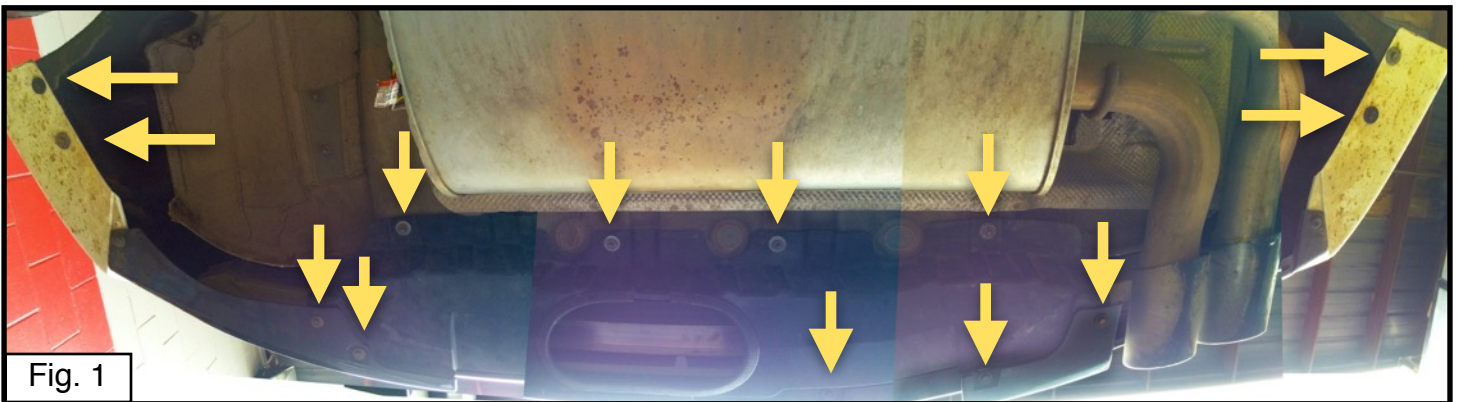
Hardware Included

QTY	Fastener
1	5/8" Flat Washer
1	5/8" Lock Washer
1	5/8"-11x3-1/2" Hex Cap Bolt
1	18" Trim Lok

**READ THESE INSTRUCTIONS THOROUGHLY AND ACCOUNT FOR ALL HARDWARE LISTED BEFORE BEGINNING INSTALLATION!**

**Step 1.** Raise rear of vehicle off of ground and place on ramps or suitable jack stands. Open rear trunk hatch.

**Step 2.** Remove (9) lag screws on the bottom of the bumper fascia as well as (4) nuts on the underbody panel. See Figure [1] for reference only.



**Step 3.** Located on the rear wall of the wheel wells, remove any screws securing the wheel well liner and set aside. See Figure [2] for reference.

**Step 4.** Remove the push rivets located along the edge of the wheel well trim. See Figure [2].



**Step 5.** Peel back the wheel well liner to release the wheel well trim tabs. You will only need to partially remove the wheel well trim. See Figure [3].



Fig. 3

**Step 6.** Remove the screws located behind the wheel well trim. See Figure [4].

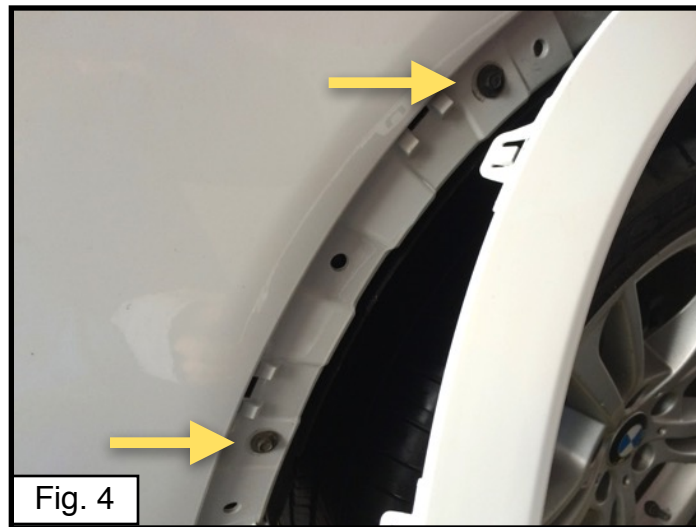


Fig. 4

**Step 7.** Using a flat headed tool, release the tab holding in the rear light reflectors and slide the reflectors inward toward the center of the trunk. See Figure [5] & [6].

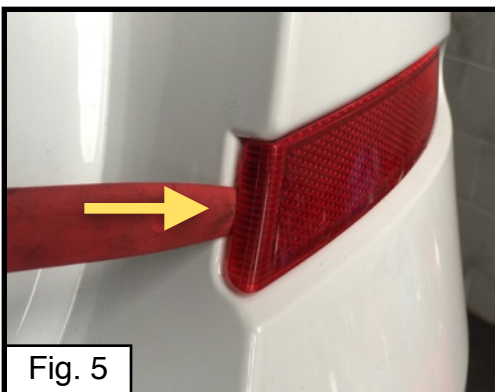


Fig. 5

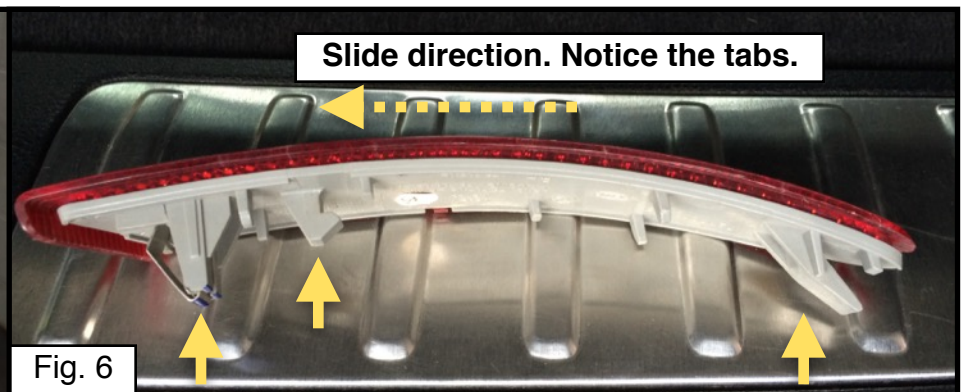


Fig. 6

**Step 8.** Remove the screw located behind the reflectors on the passenger and driver sides. See Figure [7].

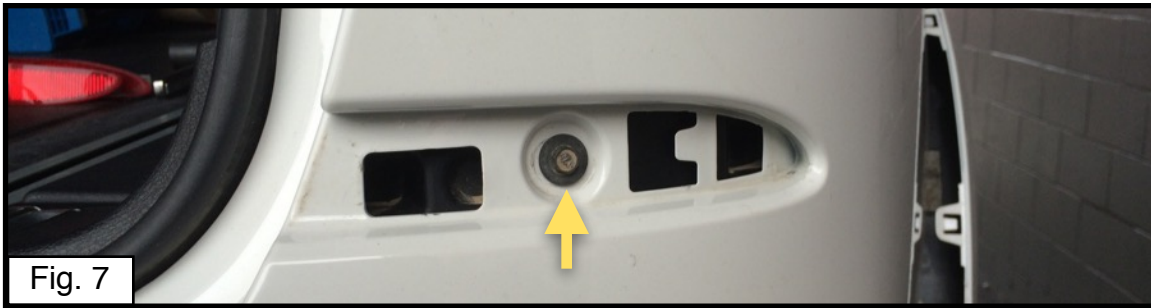


Fig. 7

**Step 9.** Slide the Light Assembly Cover upward. Once removed, remove the (2) nuts securing the Light Assembly and the (1) screw securing the bumper fascia. See Figure [8] for part removal locations. Repeat on opposite side.



Fig. 8

**Step 10.** Once the nuts securing the Light Assemblies have been removed, carefully slide the assemblies rearward and disconnect wiring to completely remove.

**Step 11.** Once all screws securing the bumper fascia to the vehicle have been removed, begin at the rear portion of the driver side wheel well and start to gently peel the bumper fascia away from the vehicle. Work your way around to the rear of the vehicle and begin to pull rearward, then continue towards the passenger side. See Figure [9]. **NOTE: It may be helpful to have an assistant for this step.**

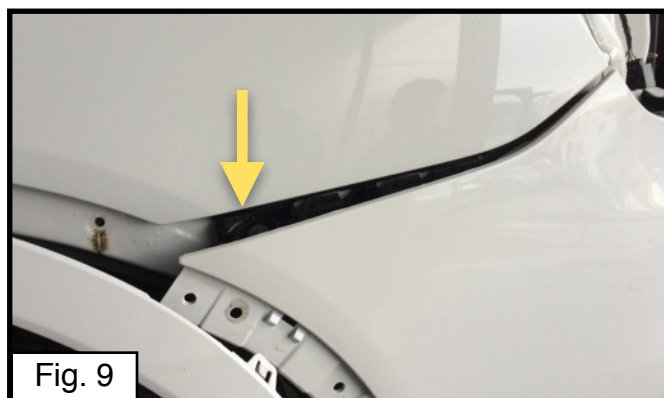


Fig. 9

**Step 10.** Mark the underbody panel removed in Step 1 for trimming. Find center of the panel by measuring 18.5" from each side and measure 2 inches off the back wall portion of the panel. Measure 4 inches to the right of your first mark and make a second mark. Use a 4 inch hole saw to cut out the two circles and then use an air saw to clean up the remaining portions. Apply the supplied Trim Lok to the edge of the cut. Use Figure [10] for reference.

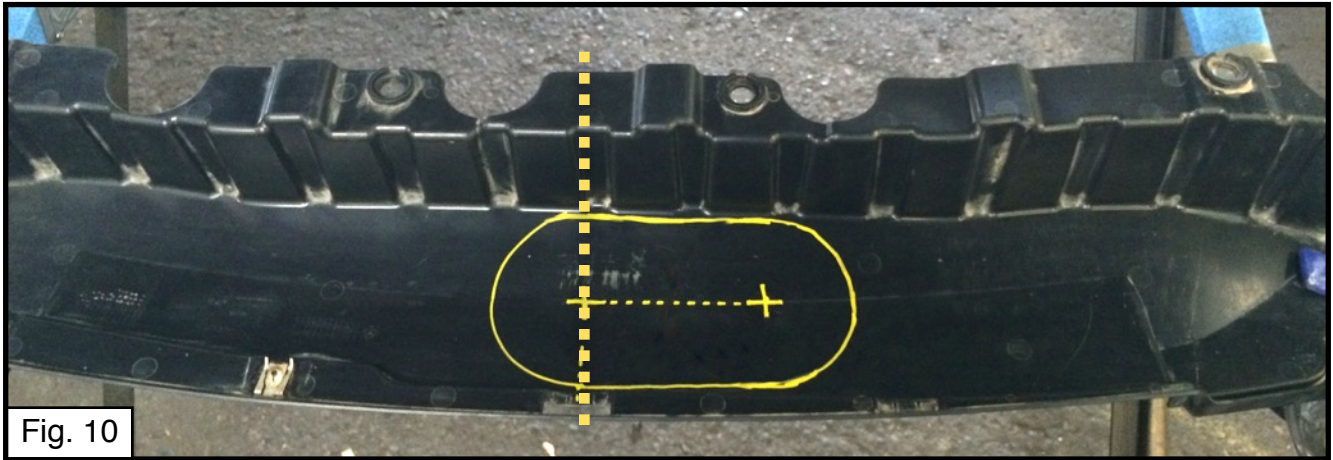


Fig. 10

**Step 11.** Unclip the antenna wiring located on the backside of the impact bar and along the black plastic panels shown in Figure [11] & [12]. Disconnect the antenna wiring from the antenna.

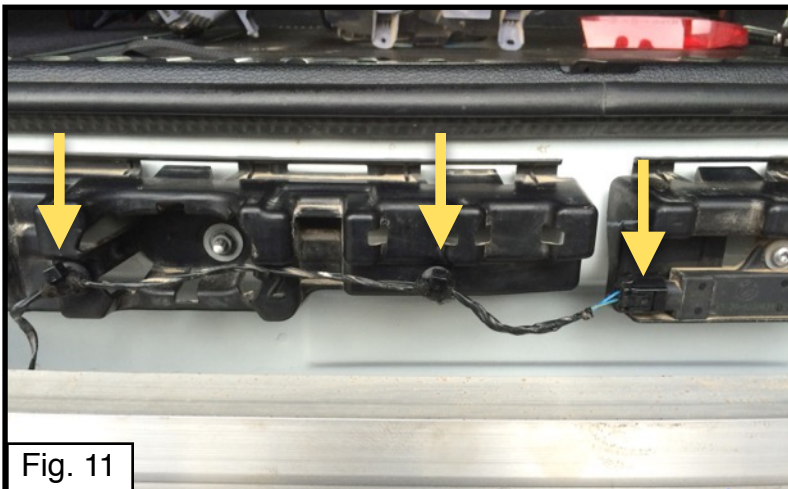


Fig. 11



Fig. 12

**Step 12.** Once the antenna wiring has been unclipped and disconnected, remove the two black plastic panels held on by (4) nuts each and then set aside. See Figure [13].



Fig. 13

**Step 13.** Remove the (4) factory nuts from the impact bar and set aside for reinstallation. Remove the impact bar and set aside. Raise the hitch into position on the vehicle studs and place the impact bar over the top. Reinstall the factory nuts and torque to 80 ft-lbs. See Figure [14] & [15] for reference.

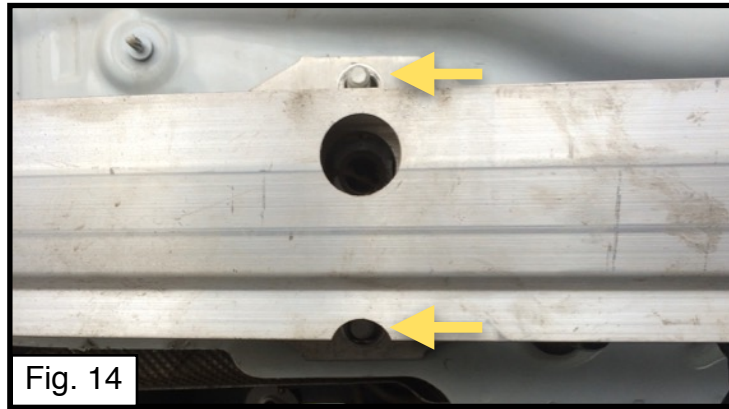


Fig. 14



Fig. 15

**Step 14.** Reinstall all removed plastic panels and bumper fascia using the factory fasteners by following these instructions in reverse starting at Step 12.

**Step 15.** Once all panels have been reinstalled, install the the receiver adapter into the hitch and secure it with (1) 5/8"x3-1/2", (1) 5/8" lock washer, and (1) 5/8" flat washer.



**Congratulations on the completed installation of the BMW X3 Invisi EcoHitch! It is designed with a lifetime warranty for a lifetime of enjoyment. If you have any questions or suggestions please contact our tech support at [support@tlcentral.com](mailto:support@tlcentral.com) or by phone at (253)-854-1832.**

# WARRANTY/DISCLAIMER INFORMATION

Torklift Central requires proof of purchase for warranty claim registration, with pictures of any defective product before issuing a replacement. Torklift will not accept claims on any product without proof of purchase, which can be faxed, scanned, emailed or mailed to the information provided below. Torklift Central warrants its hitches, custom hitch receivers and accessories (excluding electrical wire harnesses which carry a warranty from their specified manufacturer) from date of purchase against defects in material and workmanship under normal use and service for the ownership life of the original consumer purchaser. Torklift Central will replace free of charge any part that proves defective in material or workmanship when presented to Torklift Central, transportation charges prepaid by purchaser, at the address below. **This warranty is limited to defective parts replacement only. Labor charges and/or damage incurred in installation or replacement, as well as incidental and consequential damages connected therewith are excluded.** This warranty does not include normal wear and tear or the finish and paint. Rusting, cracking or peeling of the finish is also excluded. Some states do not allow the exclusion or limitation of incidental or consequential damages, so the above limitation or exclusion may not apply to you. Any damage to Torklift Central products as a result of misuse, abuse, neglect, accident, improper installation or any use violative of instructions furnished by Torklift Central will void the warranty. This warranty gives you specific legal rights and you may also have rights, which vary from state to state. With warranty service, you may be able to go to a small claims court, a state court or a federal district court.

Although Torklift Central trailer hitches are both tested and rated for towing within the specific capacity label found on each trailer hitch. Torklift Central assumes no liability for vehicle manufacturers warranty due to the use of a Torklift Central trailer hitch being used for towing behind any vehicle or using the trailer hitch in a manner that it was not designed for. Although this specific trailer hitch has a load rating, which includes trailer tongue weight, and a trailer weight carrying capacity, Torklift Central is not responsible for the voiding of any warranty on any vehicle due to factory towing limitations. All vehicle warranties are the sole property and responsibility of the owner of the vehicle that the Torklift Central trailer hitch is installed upon. Torklift Central does not endorse towing behind any vehicle if the vehicles manufacturer states that towing is not recommended. Check your vehicle's owner's manual for the proper tow rating of your vehicle.

**ADDRESS:** 315 Central Ave N. Kent, WA 98032

**\*WARNING\*** Your vehicle may have a lower tow rating than this trailer hitch. If your vehicle's tow rating is less than the rated towing capacity on your Torklift Central trailer hitch, your trailer hitch capacity is limited to your vehicle's factory rated towing capacity.

**FOR EXAMPLE:** the label on your Torklift Central trailer hitch states it's capacity is rated for 500 pounds tongue weight and 5,000 pounds towing weight. However your vehicle's factory rated towing capacity is limited to only 350 pounds tongue weight and 3,500 pounds towing weight. In this example your maximum towing capacity of your Torklift Central trailer hitch is limited to 350 pounds tongue weight and 3,500 pounds towing weight as stated by your vehicle's maximum factory tow rating.

**\*DANGER\*** Never exceed your vehicle's manufacturer's recommended towing capacity which may be a lower rating than this trailer hitch

Unsure of your tow rating? Download our towing app from the app store to find your vehicles tow rating.  
[www.torkliftcentral.com/app.php](http://www.torkliftcentral.com/app.php)